

FOR LEASE

RETAIL SHOPS

1,214 SF



SILVER FIRS SHOPPING CENTER

5714 134th Place SE, Suite 16, Everett, WA 98208

- Established location in growing, affluent Silver Firs neighborhood.
- Great schools including Glacier Peak HS, Gateway MS and elementary including Silver Firs, Totem Falls and Little Cedars.
- Other business including Applebee's, Safeway, fuel station, Subway, Teriyaki, Edward Jones, Papa Murphy's, Great Clips, and nail salon.
- 134th Place SE is major east west, connecting I-5 to SR-9.

2020 Demographics

Silver Firs	1 Mile	3 Mile	5 Mile
Population	18,051	81,510	219,674
Households	5,885	28,418	81,832
Average HH Income	\$139,484	\$134,008	\$111,437
Median HH Income	\$122,612	\$115,607	\$91,844

RICK PARKS

rickparks@trfpac.com

Office: 206-985-0107

Cell: 206-369-5770

TRF PACIFIC, LLC

2620 Second Avenue,

Seattle, WA 98121

P: 206-985-0100

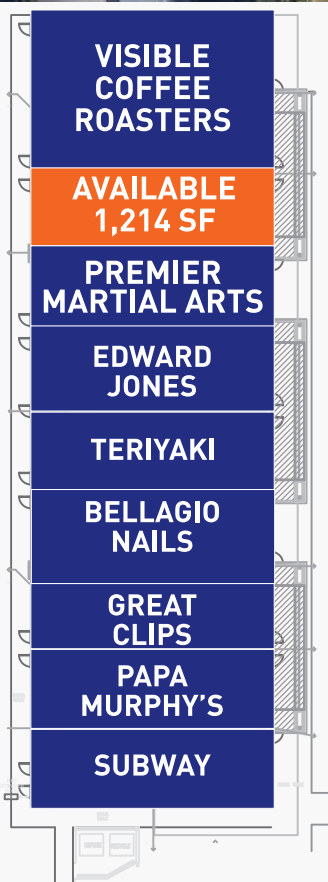
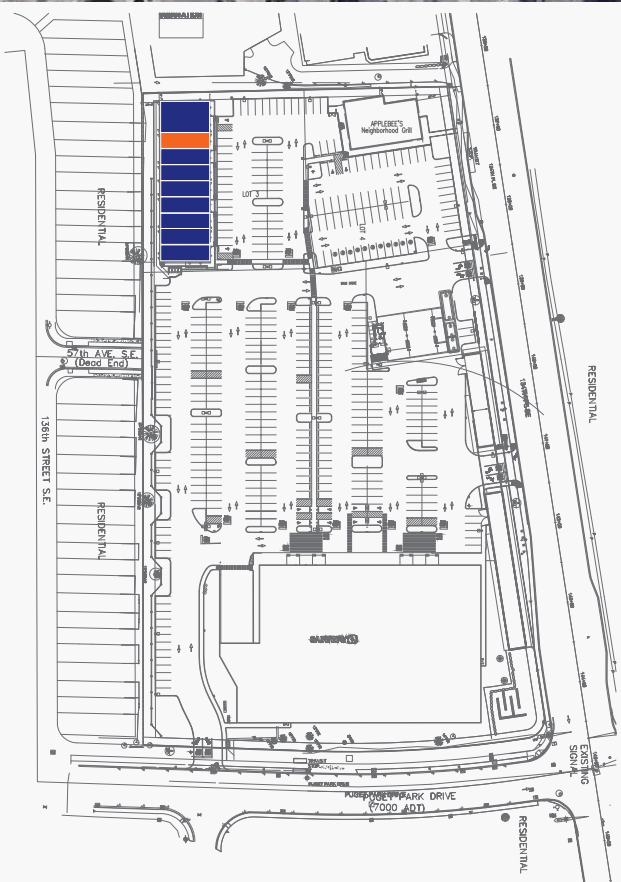
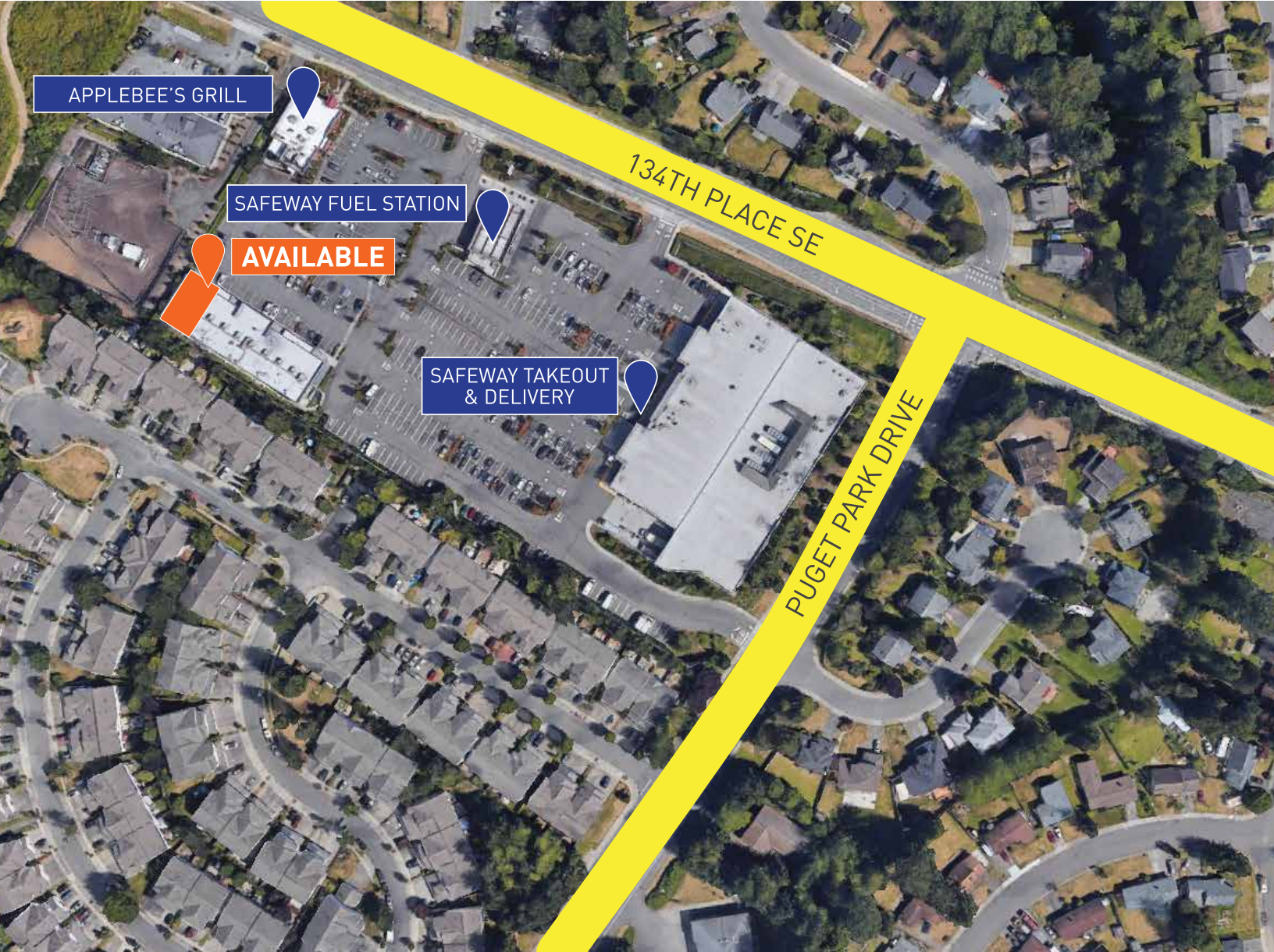
F: 206-985-0102

info@trfpac.com

Owned & Managed by:



PACIFIC



RICK PARKS
rickparks@trfpac.com
Office: 206-985-0107
Cell: 206-369-5770

TRF PACIFIC, LLC
2620 Second Avenue,
Seattle, WA 98121
P: 206-985-0100
F: 206-985-0102
info@trfpac.com

Owned & Managed by:

